



SHAANXI SHINHOM ENTERPRISE CO.,LTD

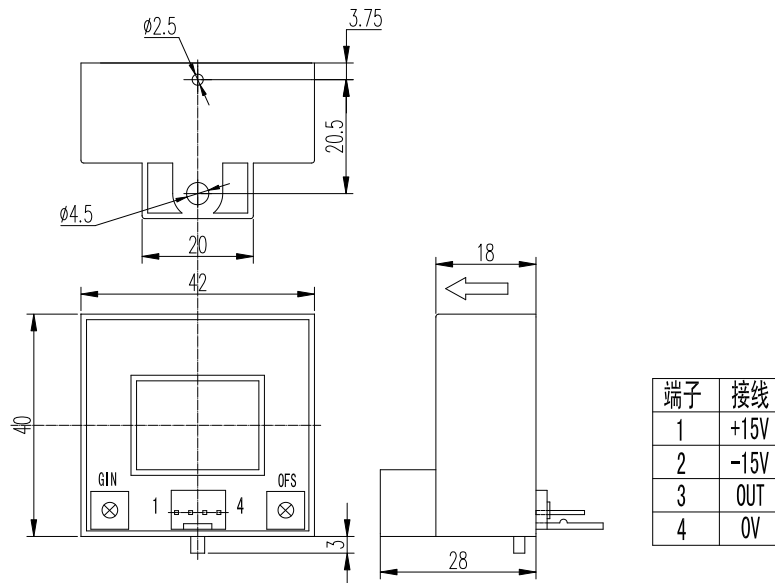
HKC-N Series Hall Effect Current Sensor

HKC-N Series current sensor with a galvanic isolation between primary and secondary circuit. It provides accurate electronic measurement of DC, AC or pulsed currents.

ELECTRICAL DATA

	HKC50 N	HKC100 N	HKC200 N	HKC300 N	HKC400 N	HKC500 N	HKC600 N	
Rated input current	50	100	200	300	400	500	600	A
Test current range	150	300	600	900	1000	1000	1000	A
Rated output voltage	4±1%							V
Supply voltage	±15 ±5%							V
Supply current consumption	≤±25							mA
Offset voltage	≤±25							mV
Magnetic offset voltage	≤±30			≤±20				mV
Offset voltage Drift	≤±1.5			≤±1				mV/°C
Linearity	≤±1							%FS
Response time	≤5							μS
Insulation voltage	(50HZ,1min),2.5							KV
Operating Temperature	-40~+85							°C
Storage Temperature	-40~+105							°C

MUTING DIMENSIONS(FOR REFERENCE ONLY)



INSTRUCTIONS FOR USE

1. When the current will be measured goes through a sensor, the voltage will be measured at the output end. (Note: The false wiring may result in the damage of the sensor).
2. The output amplitude of the sensor can be adjusted according to users requirements.
3. Custom design in the nominal input current and the output voltage available