

COMMON MODE CHOKES STC04F SERIES

FEATURES:

- Inductance range from 28uH to 1310uH
- Current range up to 5.7 Amps
- Noise attenuation up to 44 dB
- Frequency range up to 100 MHz
- Meets UL94V-0 flammability standard
- Ferrite core material

OPTIONS:

- Supplied in tape and reel packaging

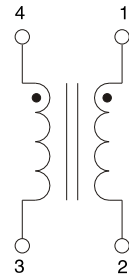
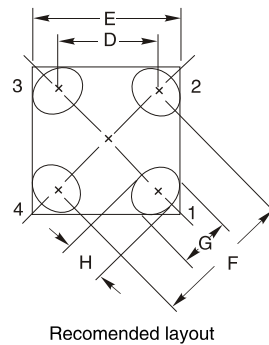
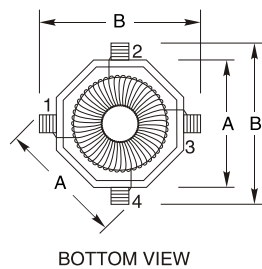
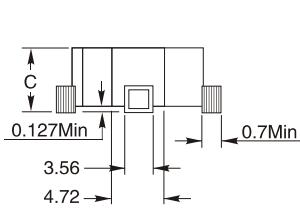
COMMON APPLICATIONS:

- EMI filters
- DC-DC brick power supplies
- Discrete output supplies
- Discrete and point-of-use power supplies

ELECTRICAL CHARACTERISTICS:

Part Number	L(0A) (uH) Min 100KHz,0.1V	I _{rms} (A)Max	DCR (Ω)Typ (1-2)	DCR (Ω)Typ (4-3)	L _k (uH) Typ 100KHz,0.1V	Interwinding Capacitance (pF)
STC04F-280Y	28	5.70	0.005	0.005	0.31	2.80
STC04F-450Y	45	5.10	0.006	0.006	0.46	3.05
STC04F-640Y	64	4.75	0.007	0.007	0.64	3.30
STC04F-881Y	88	3.95	0.010	0.010	0.85	3.50
STC04F-141Y	146	3.10	0.017	0.017	1.30	3.70
STC04F-211Y	217	2.85	0.020	0.020	1.90	3.90
STC04F-251Y	258	2.45	0.027	0.027	2.20	4.15
STC04F-351Y	350	2.00	0.040	0.040	3.00	4.40
STC04F-401Y	400	1.70	0.053	0.053	3.30	4.65
STC04F-511Y	518	1.45	0.076	0.076	4.20	4.85
STC04F-641Y	648	1.20	0.107	0.107	5.10	5.10
STC04F-791Y	790	1.05	0.145	0.145	6.10	5.35
STC04F-102Y	1030	0.88	0.210	0.210	7.80	5.55
STC04F-132Y	1310	0.75	0.300	0.300	9.60	5.80

PHYSICAL CHARACTERISTICS



NOTES:

- Inductance measure at 100KHz 0.1VRms.
- Insulation Resistance: 100Vdc 1KMΩ min.
- Dielectric Strength: 500 Vrms between windings
- Turns Ratio: 1:1
- RDC:QuadTech 1880 Milliohmmer
- Soldering temperature:260°C for 4 ± 1 seconds
- Operating temperature:-40°C to +125°C
- Storage Temperature: -40°C to +125°C
- Different package available per special request
- Max of 35% saturation on DC bias applied

A	B	C	D	E	F	G	H
11.43	13.97	6.35Max	8.84	12.5	12.5	4.06	3.05